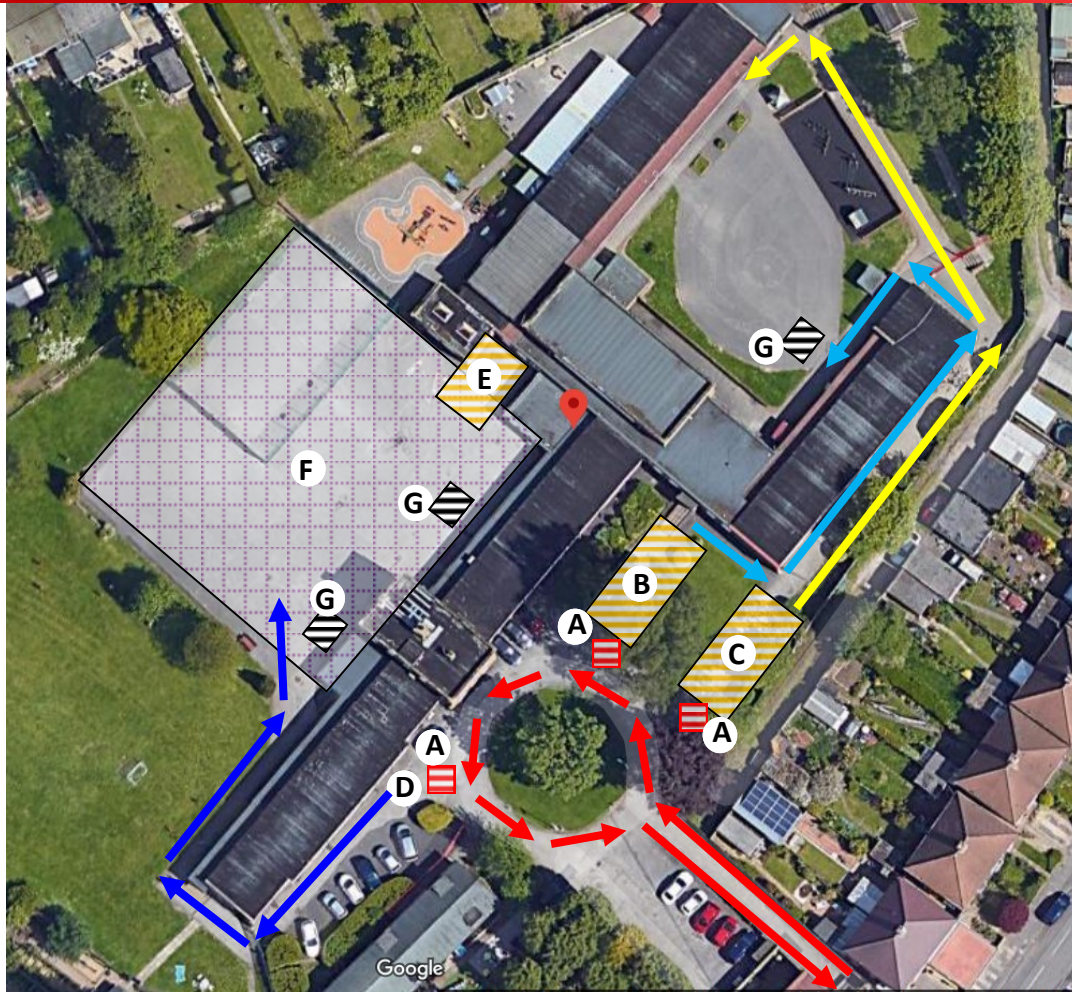






Stanville Primary School



Stanville Road, Sheldon, Birmingham, B26 3YN
 Tel: 0121 4642322 Fax: 0121 4642531
 Email: enquiry@stanville.org



Code	Description
A	Collection box for communications and letters for School Office. Main entrance is inaccessible to parents without prior appointment
B	Year 1 and Year 2 Pupils assembly point upon arrival and departing school
C	Reception and Nursery Pupils assembly point upon arrival and departing school
D	Year 3, 4, 5 and 6 drop off and collection point. No parents beyond this point.
E	Year 3 Assembly point.
F	Year 4, 5 and 6 area
G	External handwashing station
	Route for all parents to bring children to and from school. Parents are not allowed beyond this route without prior appointment
	Route for Reception and Nursery children to and from school. Parents are not allowed to access EYFS/KS1 areas without prior appointment
	Route for Year 1 and 2 children to and from school. Parents are not allowed to access EYFS/KS1 areas
	Route for Year 3, 4, 5 and 6 children to and from school. Parents are not allowed to access KS2 areas

For further information please click on the relevant year group icon